

# \$624,900 - 141 28 Avenue Ne, Calgary

MLS® #A2261200

**\$624,900**

3 Bedroom, 3.00 Bathroom, 1,625 sqft  
Residential on 0.07 Acres

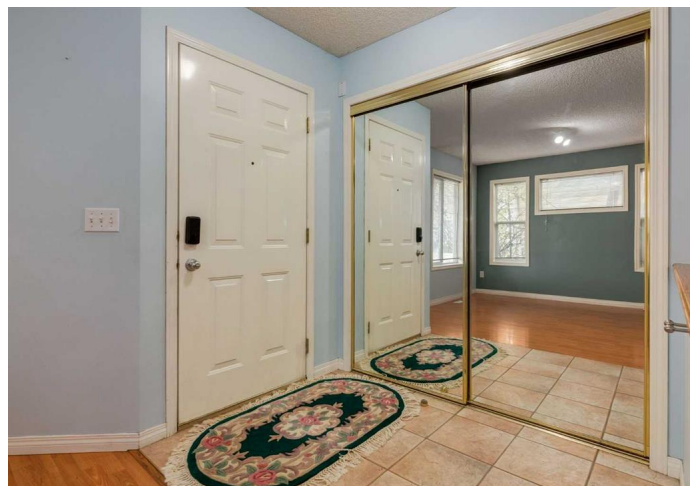
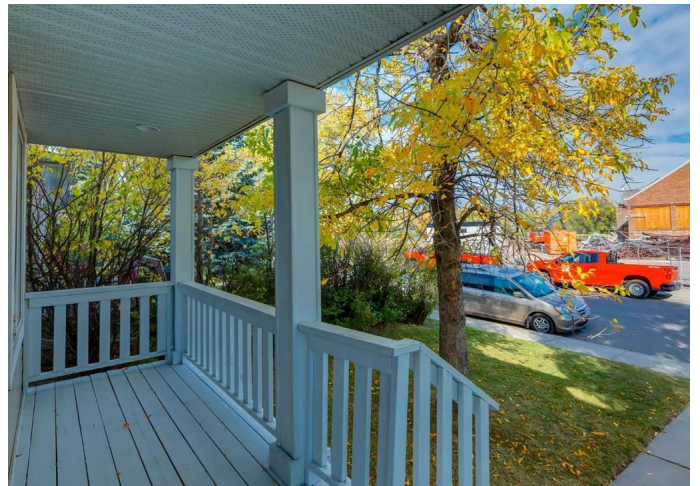
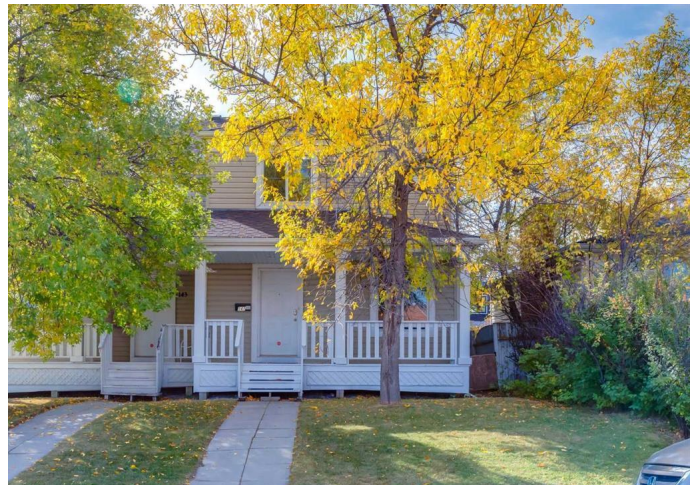
Tuxedo Park, Calgary, Alberta

Great valued two storey home located in Tuxedo Park. This semi-detached home features a main floor with laminate and tile flooring throughout. A front living room with a gas fireplace and formal dining room. Kitchen with granite countertops, white appliances, plenty of upper and lower cabinets and corner pantry. Rear breakfast nook and 2pc bathroom. The upper level features the large primary bedroom with walk-in closet and 3pc ensuite with cultured marble vanity and stand-up shower. Two other good sized bedrooms each with their own walk-in closet and full 4pc bathroom. The basement is unfinished with roughed-in plumbing awaiting your personal touches. South facing backyard with a deck and detached double garage. Plenty of windows throughout bringing in great natural light and roughed in vacuum system. Close to downtown, restaurants, shopping and schools. Don't miss out on this opportunity. Make your private showing today.

Built in 1999

## Essential Information

MLS® #	A2261200
Price	\$624,900
Bedrooms	3
Bathrooms	3.00
Full Baths	2
Half Baths	1



Square Footage	1,625
Acres	0.07
Year Built	1999
Type	Residential
Sub-Type	Semi Detached
Style	2 Storey, Side by Side
Status	Active

### **Community Information**

Address	141 28 Avenue Ne
Subdivision	Tuxedo Park
City	Calgary
County	Calgary
Province	Alberta
Postal Code	T2E 2A9

### **Amenities**

Parking Spaces	2
Parking	Double Garage Detached
# of Garages	2

### **Interior**

Interior Features	Granite Counters
Appliances	Dishwasher, Dryer, Electric Stove, Garage Control(s), Range Hood, Refrigerator, Washer, Window Coverings
Heating	Forced Air
Cooling	None
Fireplace	Yes
# of Fireplaces	1
Fireplaces	Gas
Has Basement	Yes
Basement	Full, Unfinished

### **Exterior**

Exterior Features	Private Entrance, Private Yard
Lot Description	Back Lane, Back Yard, Front Yard, Landscaped, Rectangular Lot
Roof	Asphalt Shingle
Construction	Vinyl Siding, Wood Frame
Foundation	Poured Concrete

## **Additional Information**

Date Listed            October 1st, 2025  
Days on Market        34  
Zoning                    R-CG

## **Listing Details**

Listing Office            RE/MAX First

Data is supplied by Pillar 9â„¸ MLSÂ® System. Pillar 9â„¸ is the owner of the copyright in its MLSÂ® System. Data is deemed reliable but is not guaranteed accurate by Pillar 9â„¸. The trademarks MLSÂ®, Multiple Listing ServiceÂ® and the associated logos are owned by The Canadian Real Estate Association (CREA) and identify the quality of services provided by real estate professionals who are members of CREA. Used under license.