

# \$235,000 - 105, 21 Dover Point Se, Calgary

MLS® #A2259604

## \$235,000

2 Bedroom, 2.00 Bathroom, 788 sqft

Residential on 0.00 Acres

Dover, Calgary, Alberta

2-bedroom, 2-bathroom ground-floor unit in Dover, complete with two outdoor parking stalls. This home features in-suite laundry, a laundry/storage room, and an open layout living room that leads to a private, covered patio.

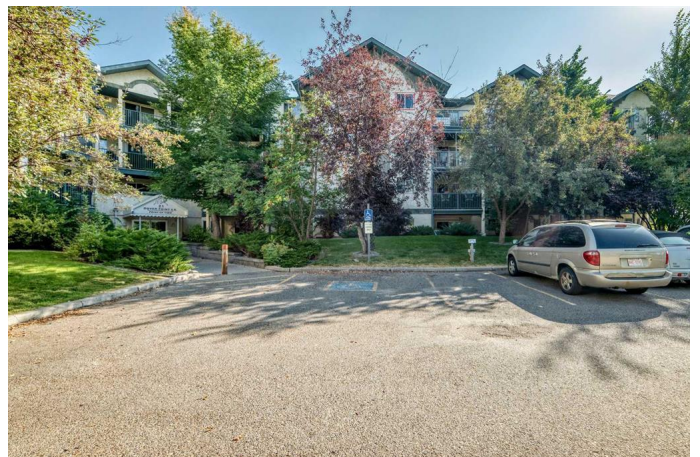
The primary bedroom includes a walk-through closet and a 4-piece en-suite, while the second bedroom and additional 4-piece bathroom are located on the opposite side of the unit.

Located in a quiet, professionally managed complex. Ideally situated just minutes from Peigan Trail, Deerfoot Trail, Stoney Trail, and downtown.

Built in 1994

## Essential Information

MLS® #	A2259604
Price	\$235,000
Bedrooms	2
Bathrooms	2.00
Full Baths	2
Square Footage	788
Acres	0.00
Year Built	1994
Type	Residential
Sub-Type	Apartment



Style	Single Level Unit
Status	Active

### Community Information

Address	105, 21 Dover Point Se
Subdivision	Dover
City	Calgary
County	Calgary
Province	Alberta
Postal Code	T2B3J8

### Amenities

Amenities	Elevator(s), Parking, Visitor Parking
Parking Spaces	2
Parking	Assigned, Stall, Outside

### Interior

Interior Features	No Animal Home
Appliances	Dishwasher, Electric Stove, Range Hood, Refrigerator
Heating	Baseboard
Cooling	None
# of Stories	4

### Exterior

Exterior Features	None
Construction	Composite Siding, Wood Frame

### Additional Information

Date Listed	September 24th, 2025
Zoning	M-C1 d75

### Listing Details

Listing Office	WExcel
----------------	--------

Data is supplied by Pillar 9â„¢ MLSÂ® System. Pillar 9â„¢ is the owner of the copyright in its MLSÂ® System. Data is deemed reliable but is not guaranteed accurate by Pillar 9â„¢. The trademarks MLSÂ®, Multiple Listing ServiceÂ® and the associated logos are owned by The Canadian Real Estate Association (CREA) and identify the quality of services provided by real estate professionals who are members of CREA. Used under license.