

\$267,500 - 402, 235 15 Avenue Sw, Calgary

MLS® #A2219250

\$267,500

2 Bedroom, 2.00 Bathroom, 860 sqft

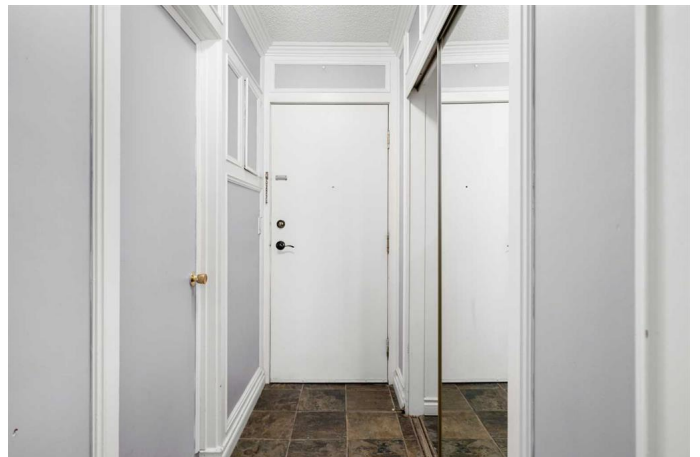
Residential on 0.00 Acres

Beltline, Calgary, Alberta

Welcome to your perfect downtown escape! This spacious 2-bedroom, 1.5-bathroom corner unit combines comfort, convenience, and style—complete with in-suite laundry, pet-friendly policies (pending approval), and a wrap-around balcony offering stunning skyline views, including a direct sightline to the iconic Calgary Tower. Located in a quiet concrete building, this home is ideal for professionals, first-time buyers, or savvy investors looking to capitalize on a vibrant, up-and-coming area of Calgary.

Step into the bright and open living space, where large windows flood the unit with natural light and lead out to your private outdoor oasis. The expansive wrap-around balcony provides ample room for lounging or entertaining, with added exterior storage for convenience. Plus, enjoy the benefit of an additional dedicated storage unit located in the secured area of the basement—perfect for seasonal gear or extra belongings.

Inside, the functional galley-style kitchen is designed for efficiency and flow, featuring overhead cabinetry and plenty of cupboard and counter space, seamlessly connecting to the dining area. The primary bedroom includes a private 2-piece en-suite, large window, and stylish laminate flooring, while the generously sized second bedroom offers flexibility for guests, roommates, or a dedicated home office.



With two well-proportioned bedrooms, 1.5 bathrooms, and unbeatable walkability to 17th Ave, restaurants, shops, and major transit lines, this unit stands out for its livability and value. Rare at this price point, the inclusion of in-suite laundry and pet-friendliness adds even more appeal. Donâ€™t miss your opportunity to own this downtown gemâ€”schedule your private showing today!

Built in 1981

Essential Information

MLS® #	A2219250
Price	\$267,500
Bedrooms	2
Bathrooms	2.00
Full Baths	1
Half Baths	1
Square Footage	860
Acres	0.00
Year Built	1981
Type	Residential
Sub-Type	Apartment
Style	Single Level Unit
Status	Active

Community Information

Address	402, 235 15 Avenue Sw
Subdivision	Beltline
City	Calgary
County	Calgary
Province	Alberta
Postal Code	T2R0P6

Amenities

Amenities	None
Parking Spaces	1

Parking	Carport, Off Street, Secured, Stall, Enclosed
---------	---

Interior

Interior Features	Built-in Features, Open Floorplan
Appliances	Dishwasher, Microwave Hood Fan, Refrigerator, Stove(s), Washer/Dryer Stacked
Heating	Boiler
Cooling	None
# of Stories	8

Exterior

Exterior Features	Balcony
Roof	Membrane
Construction	Brick, Concrete, Stucco

Additional Information

Date Listed	May 8th, 2025
Days on Market	15
Zoning	CC-MH

Listing Details

Listing Office	KIC Realty
----------------	------------

Data is supplied by Pillar 9â„¢ MLS® System. Pillar 9â„¢ is the owner of the copyright in its MLS® System. Data is deemed reliable but is not guaranteed accurate by Pillar 9â„¢. The trademarks MLS®, Multiple Listing Service® and the associated logos are owned by The Canadian Real Estate Association (CREA) and identify the quality of services provided by real estate professionals who are members of CREA. Used under license.